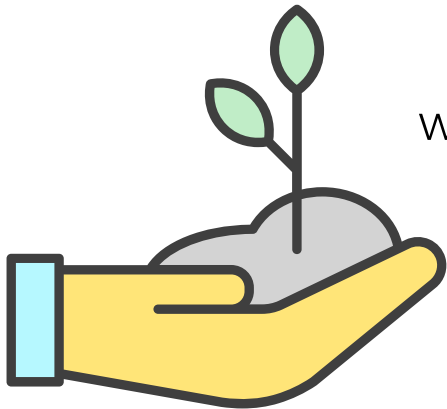


COLLEGE OF CHARLESTON STUDENT GARDENS

SIMPLE STEPS WITH HUGE IMPACT



OUR MISSION

We aim to provide and support **experiential education**, **academic research**, and **food production** by utilizing sustainable lowcountry gardening practices for the College of Charleston, local schools, and Charleston regional community members.

THE STUDENT GARDEN AT STONO PRESERVE

A tract of 1000 acres of land in Hollywood, SC, was gifted to College of Charleston from naturalist artist, John Henry Dick, to be dedicated to **conservation**. Stono Preserve is rich with wildlife, such as snowy egrets and even bald eagles due to its assortment of habitats, like longleaf pine forest, maritime forest and saltwater marsh. Our 3-acre garden here facilitates organic food production, research, and educational outreach.



DOWNTOWN GARDENS

We have three urban gardens that all serve their own unique purpose. We have a **community produce garden** that students can harvest from for free. We have a **pollinator garden** that consists of native species and utilizes collected rainwater. The **herb garden** at the Political Science building also offers free harvest to the campus community.

COMMUNITY OUTREACH

Our produce is donated to the **Stone Soup Collective** that serves free soup to students to ensure our efforts support our campus community. A section of our Stono Student Garden grows lettuce for **SC Aquarium's** green sea turtles to help supply the 11 pounds of lettuce they consume a day!

Charleston Area Beekeeping Association has bee colonies established at Stono Preserve to provide pollination. These are only some of the many partnerships we have!



GET INVOLVED

We need your help! Want to be a part of a group of students that are dedicated to giving back to our community? We have **weekly workdays** at our **downtown** gardens on **Fridays 10 AM - 12 PM** at Warren Place! We also have workdays at **Stono Preserve** every other **Sunday 2 PM - 4 PM**. Our workdays are a great way to get outside and learn about gardening and local food production!

Contact information:

Program Coordinator: Lucy Davis
davislh@cofc.edu

STONO PRESERVE
5297 DIXIE PLANTATION ROAD

